



New Hampshire Public Television Report to the Community

FY15 July 1, 2014 – June 30, 2015

New Hampshire Public Television is the Granite State's PBS station. As a statewide network, NHPTV provides commercial-free programming that reflects the interests and issues important to our audiences.

The station contributes to the quality of life in New Hampshire by providing locally produced programs and PBS favorites, educational services for learners of all ages, community initiatives, and online resources that inspire and inform.

It was all smiles at the summit after the "Buffalo and Tough Cookie" hike during the 10th season of *Windows to the Wild*.



Local Value

For more than half a century, New Hampshire Public Television has focused on providing programming with a purpose to those who live in the Granite State. NHPTV produces and delivers content-based programs and services on multiple platforms that reflect the needs and interests of its audiences.

Programming on New Hampshire's PBS station is unique in that it is designed to have impact well beyond the broadcast. From locally produced and focused programs, to PBS standards like *Frontline*, *NOVA* or the latest Ken Burns documentary, audiences are encouraged to be engaged when they watch programs on NHPTV.

As a multi-media, educational non-profit organization, NHPTV is available on-air, online and in the community.

Local Productions

Locally produced programs on NHPTV showcase the people and places that make the

Granite State and New England unique and desirable places. Our television programs inspire and educate viewers. All of NHPTV's locally produced programs are available online.

Our local productions in FY15 included *Windows to the Wild*, *Granite State Challenge*, *Changing Aging in the Granite State*, *Climbing to the Clouds: The Mt. Washington Cog Railway*, and a new series, *Our Hometown*.

NHPTV won numerous awards this year: two Boston/New England Emmy Awards, seven NHAB Granite Mike Awards, the AARP New Hampshire 2014 Community Partner of the Year, and BIA NH 2014 New Hampshire Advantage Award.

Windows to the Wild

NHPTV celebrated the 10th season of *Windows to the Wild* with an impressive range of episodes, including one from Iceland! On NHPTV's most watched local program and award-winning nature series, host Willem Lange hikes, paddles and explores New England, discovering the distinctiveness of these wild places.

This season, viewers joined Lange on a hike with On Belay, a NH-based nonprofit that offers adventure-based programs for youths who have a family member with cancer; winter camping in Vermont; climbing Mt. Monadnock; and exploring the stunning geology of Iceland.

As well as celebrating the 10th season of the award-winning show, we toasted Willem when he turned 80 in May. To mark this milestone season, NHPTV secured grant funding to publish *Words from the Wild*, a collection of essays from Willem's *A Yankee Notebook* column about his adventures on the show. The book was published and printed in New Hampshire, and the paper for it was donated by Monadnock Paper Mills.

During a celebration event in May at the Appalachian Mountain Club's Highland Center, we learned that Willem and the show had won two New England Emmys! nhptv.org/windows

Jeffrey Gilbert

Board Chair
W.J.P. Development,
LLC

**Katherine Wells
Wheeler**

Vice Chair
Retired

Lois Haskins

Treasurer
LGH Consulting

Ronald L. Abramson

Secretary
Abramson Immigration
Solutions

Mark H. Collin

Immediate Past Chair
Unitil Corporation

William A. Barker

Retired

Colleen Chen

Pilot, Vertical Ventures
Aviation

Marge Chiafery

Merrimack School
District

Katharine Eneguess

Magalloway Consultants

Marilyn Higgins Forest

Real Estate Management

Erin Hennessey

Certified Public
Accountant

Edward MacKay

Higher Education
Commission

James T. McKim

Global Learning
Solutions
Development Program
Manager

Sean O’Kane

Windward Strategies &
Partners

Zachary Slater

UBS - The Slater Group

John Swope

Retired

Cynthia Wentworth

Charter Trust Company

Peter A. Frid

NHPTV President & CEO

Granite State Challenge

Granite State Challenge is NHPTV’s spirited high school quiz program and longest running local production. The 31st season kicked off in November with its annual Super Sunday qualifying event at Plymouth State University. More than 50 schools vied to become one of the 16 teams selected to appear on the show.

“My wife and I are NHPTV supporters and avid fans of *Granite State Challenge*. This could only happen on PBS!”

Bishop Guertin High School, the winner of the *Granite State SuperChallenge*, faced off against the season winner of WGBH’s High School Quiz Show in Boston in the third annual Governor’s Cup Challenge. For the second year in a row, New Hampshire took home the trophy.

Since the show’s inception, the primary goal of GSC has been to provide a platform where academically talented students are able to generate school spirit and receive similar recognition and accolades as their athletic peers. The assistant producer of the program posts GSC-type questions to engage our audience on social media. *Granite State Challenge* has received the endorsement of the Commissioner of the NH Department of Education. nhptv.org/gsc

Our Hometown

NHPTV launched its *Our Hometown* series in October, with the first episode focused on the town of Peterborough, the original “Our Town” of Thornton Wilder fame.

The ambitious new series aims to highlight the vibrant history, culture, commerce, and people of each of New Hampshire’s 221 towns and 13 cities. It is produced in partnership with each community – the residents themselves tell their stories about life in that community.

Our Hometown is hosted by New Hampshire native, author and humorist Rebecca Rule. The program’s production begins when the producers meet with key community members to learn about the town and its history. This is followed by a storytelling workshop, where townspeople are invited to learn more about the program and to participate.

A production location is identified, and the community members are scheduled to bring memorabilia and meet with a producer and have their stories videotaped. Finally, the stories are edited to create a 30-minute program for broadcast; those not used in the broadcast are available online and serve as an archive of the town’s history.

Once the program is completed, a screening is held in the town prior to the program’s broadcast. The towns of Colebrook and Stratham will be featured next in the series. nhptv.org/hometown

COMMUNITY
ADVISORY BOARD
2014-2015

Dr. Kristen Nevius

Chair
Marlin Fitzwater Center
for Communications,
Franklin Pierce University

Joan Goshgarian

Vice Chair
NH Business Committee
for the Arts

Steve Ahnen

NH Hospital Association

Thomas Blinkhorn

Economic Development
Consultant

Janice Crawford

Mt. Washington Valley
Chamber
of Commerce

Mary DeVries

Wolfeboro Chamber
of Commerce

Lew Feldstein

Retired CEO
NH Charitable Foundation

Cheryl Lee Gilbert

Consultant

Brian Hoffman

Community Action
Program Belknap-
Merrimack Counties, Inc.

Pamela Laflamme

Community Development
Director, City of Berlin

Justine Vogel

RiverWoods at Exeter



Top: The Blackbirds of Keene High School get their spirits up at the *Granite State Challenge* Super Sunday competition in November.

Middle: There was a full house at Peterborough Community Theatre for the screening premiere of *Our Hometown: Peterborough* in March.

Bottom: NHPTV’s new *Our Hometown* series is hosted by NH author and storyteller Rebecca Rule.



Climbing to the Clouds: The Mount Washington Cog Railway

The iconic and historic Mount Washington Cog Railway was the subject of a new NHPTV co-production about the first mountain-climbing cog railway in the world. Designated as a National Historic Engineering Landmark, the Cog Railway was built in 1866 to give everyone a chance to experience the highest peak in the Northeast.



In the program by producer/videographer Steve Giordani (who was once an engineer on the Cog), viewers explore the history of this engineering marvel, and see how it has evolved to become a biodiesel and steam operation and international tourist destination.

The documentary premiered in May and a screening was held at the Mt. Washington Hotel as part of a celebration that included a ride on the Cog and dinner attended by 130 people.

nhptv.org/cog

Changing Aging in the Granite State

NHPTV continued its partnership with AARP New Hampshire to present *Changing Aging in the Granite State*, a series of programs and community engagement events focusing on timely subjects such as consumer fraud, long-term care, financial security, and health care.

In FY15, NHPTV presented new episodes on memory loss and encore careers. Parts of each program were taped with a studio audience. Each episode is available on the state's public access media channels, as well as via the national PBS online video system. Programs and resource links are available on the website. The program on memory loss became part of a community conversation, as AARP-NH and NHPTV hosted five free screenings around the state and discussions led by experts. More than 300 attendees participated in these events, and additional screenings are planned.

nhptv.org/aging

PROGRAMS IN PRODUCTION FOR FY16

Plight of the Grassland Birds calls attention to the population decline of New England and North American grassland birds. NHPTV received a grant to produce this one-hour program, the fifth in a series of award-winning bird-related documentaries distributed to PBS stations around the country. A *Windows to the Wild* special, the documentary explores the reasons grassland bird populations are in sharp decline and the efforts underway to slow the

trend. Viewers are introduced to the birds, their habitats, and the experts studying them in New England, Montana, Canada, and northern Mexico.

Saving New England Fisheries is a one-hour grant-funded documentary focused on changes and threats to ocean fisheries in New England. In partnership with NH Sea Grant and UNH Cooperative Extension, the program explores fishing practices and communities, consumer interest, and sustainable fishing practices.

First! Understanding New Hampshire's Presidential Primary is a partnership between NHPTV and the University of New Hampshire. The project is a seven-week Massive Open Online Course (MOOC) focused on the history and importance of NH's First-in-the-Nation Presidential Primary. Taught by nationally recognized UNH political science professors and commentators Dr. Andrew Smith and Dr. Dante Scala, NHPTV produced the video lectures and provided archival footage for this class that will launch in October 2015.

Raising New Hampshire: The Early Years is a grant-funded, 30-minute program that seeks to raise awareness about the policy, programmatic and cultural challenges facing disadvantaged children, families and communities in New Hampshire. Produced as a locally focused companion piece to the national PBS documentary series, *The Raising of America: Early Childhood*, it will tell New Hampshire's story as it relates to early childhood issues and solutions.

Local Impact

Throughout the year, NHPTV hosts screenings and discussions around the state:

Community Cinema. For five years, NHPTV has partnered with Red River Theatres in Concord and this year added Franklin Pierce University in Rindge to present the Emmy-Award winning PBS program Independent Lens' Community Cinema series. These are free monthly screenings followed by discussions about the film. Community Cinema is a nationwide, public education and civic engagement initiative to bring communities and public television stations together to learn about, discuss and get involved in, social issues. In FY15, more than 500 people attended these screenings.

The premiere of *The Roosevelts: An Intimate History*, a new PBS documentary by New Hampshire's own award-winning documentary filmmaker Ken Burns, offered an opportunity to hold three free preview screenings in September (Rindge, Manchester, Concord), along with a discussion with its producers from Florentine Films. At the Saint Anselm College screening, the granddaughter of Franklin and Eleanor



Top: NHPTV's local programs once again garnered New England Emmy awards.

Middle: In conjunction with Ken Burns's documentary on the Roosevelt family, NHPTV hosted screenings and discussions of the program. Anna Eleanor Roosevelt joined the conversation with Florentine Films producers.

Bottom: NHPTV producer/videographer and former Cog Railway engineer Steve Giordani at work on the Mt. Washington Cog Railway program.





Top: Mia L. of Hampton was the first-place winner in the NHPTV KIDS Writers Contest and a winner in the 2015 PBS KIDS Writers Contest for her story "The Planet Police."

Middle: The very popular *Masterpiece* series, *Downton Abbey*, drew fans to preview screenings.

Bottom: The NHPTV KIDS Club had a Valentine's Day party at the station featuring characters from *Peg + Cat*.



participated in the conversation. The film series interweaves the stories of three powerful Roosevelts: Theodore, Eleanor, and Franklin. More than 300 people enjoyed the screenings.

Following a screening of the Academy Award-nominated documentary *Last Days in Vietnam*, which tells the stories of the brave soldiers that fought to save their South Vietnamese allies as Saigon fell, NHPTV hosted a panel of three Vietnam veterans who discussed their experiences during the war. The discussion was held in partnership with the nonprofit Red River Theatres in Concord and Vetflix, a non-profit which collects veterans' stories. NHPTV received a grant from *American Experience* for the event.

Downton Abbey on Masterpiece debuted season 5 of its enormously popular drama in January. As part of the series promotion, NHPTV held five free screenings of the season's first episode in December in Concord, Keene, Exeter, Hanover and Manchester. More than 400 people attended these fan events.

Planet Granite is NHPTV's multi-media community engagement initiative focused on the environment. It highlights subjects such as sustainability, ecology, and energy conservation in an effort to raise awareness, and present possible solutions. PLANET GRANITE is funded by foundation and corporate support, and presents stories and resources on-air and online. nhptv.org/planetgranite

Educational Outreach Services

Education is core to NHPTV's public service mission. The station offers a wide variety of resources, training and outreach services to children, families and teachers throughout the Granite State free of charge. Reaching more than 200,000 children annually, educational media from PBS and NHPTV is research-based and has been proven to help build the fundamental skills needed for literacy and math skill development to ensure all children enter school with a solid foundation for success. NHPTV's educational resources take a multi-media approach to learning and align with the State of NH education curriculum standards. Its engagement and outreach activities use PBS children's programming as a springboard to learning, encouraging children and families to embrace the concept of "view-read-do."

NHPTV-PBS KIDS Writers Contest

For more than two decades, students in grades K - 3 have written and illustrated original stories for the NHPTV-PBS KIDS Writers Contest. The contest is part of NHPTV's commitment to reading, writing and literacy skill development as well as creative expression. The contest runs from January through March, and aligns with New Hampshire writing and reading standards.

In FY15, NHPTV received over 400 entries. A trip to space, the Tooth Fairy, and the Planet Police were among the subjects of winning stories. NHPTV had two national contest winners who competed with first place entries from 62 other public television stations. NHPTV's Education Manager sends a customized email to every child author, highlighting something positive about the story. All of the winning entries are online, and the first-place winners are featured on NHPTV reading their stories. nhptv.org/kidswrite

Family Outreach

Families across New Hampshire had the opportunity to explore, play and create in the areas of STEM (science, technology, engineering, and math), literacy, art, and health through a series of NHPTV Family Outreach Events. These events are designed to extend the value of PBS and NHPTV programming and to promote learning and engagement for families with children in grades K-5. NHPTV visits a school or community organization and sets up hands-on interactive learning stations for families to explore a given topic. In FY15, kids and parents designed balloon powered cars, amazed their friends with magic tricks with a foundation in math, created their own hand-made books, and designed towers made of spaghetti, string, and marshmallows. NHPTV impacted more than 1,180 parents, 1,052 children, and 542 educators through these events.

Mini Makers Faire

In FY15, NHPTV participated in the second Mini Makers Faire held by the Children's Museum of New Hampshire. The faire is a celebration of imagination and ingenuity with demonstrations and talks by dozens of makers, ranging from engineers and artists to programmers, builders, students and hobbyists. More than 1,200 people attended the event featuring 50 makers demonstrating their talents. The NHPTV "maker" project was birdfeeders to give kids the opportunity to learn about NH birds in their backyards.

“...the 4 honorable mention recipients of the Writers Contest got to lead the Pledge of Allegiance at the School Board meeting and then also got to share their stories!!! They received a pin in recognition of their accomplishment. Again, thank you for an amazing program.”

Discover Wild NH Day

For 10 years, NHPTV has participated in Discover Wild NH Day, an event co-sponsored by the NH Fish and Game Department and the NH Department of Environmental Services. About 7,000 people spent an April day exploring exhibits from New Hampshire environmental and conservation organizations. NHPTV's educational outreach team promoted its online resources, including *NatureWorks* and *Wildlife Journal, Jr.*, and screened clips of its outdoor adventure program, *Windows to the Wild*. At the NHPTV booth, kids created dragonflies, butterflies and spiders, and collected animal power discs from the popular PBS KIDS program *Wild Kratts*.

NHPTV Clubs

NHPTV KIDS Club

The *NHPTV Kids Club* offers children ages 2 – 8 and their families unique opportunities to engage with NHPTV and PBS children's programming. NHPTV's longstanding commitment to delivering educational children's programming helps families use television wisely and creates opportunities for learning and quality family time. The NHPTV Kids Club offers members special benefits, including invitations to special events around the state, an exclusive Kids Club e-newsletter, and a birthday month shout-out on-air.



NHPTV was feeling the love when the Kids Club hosted a Valentine's Day Party with *Peg + Cat* on February 14. This free event featured the PBS KIDS characters Peg + Cat in costume, a local band, dancing and a sing-a-long, a screening of the *Peg + Cat* Valentine's Day episode, crafts, snacks, and fun with math. NHPTV hosted morning and afternoon parties to accommodate the 150 children and family members who registered. nhptv.org/kids

Brit Wit Club

NHPTV's *Brit Wit Club* celebrates our viewers' longstanding love of British programs and public television. Members have an opportunity to attend NHPTV events, see sneak previews, meet with fellow British aficionados, and offer input on programming. The *Brit Wit Club* has more than 500 members. nhptv.org/britwit

Special Events

State of the Station Event

"Our New Hampshire" was the theme of NHPTV's third annual *State of the Station* event. Held in June for leadership donors and sustainers, it showcased how NHPTV's storytelling captures the spirit of the Granite State. The evening celebrated two of our local series, *Windows to the Wild* and *Our Hometown*, and the station's newest documentary, *Climbing to the Clouds: The Mount Washington Cog Railway*. Show hosts, authors and storytellers Willem Lange and Rebecca Rule entertained guests with behind-the-scenes stories from their experiences.

42nd Annual Spring Auction & Online Holiday Auction

NHPTV held its *42nd Annual Spring Auction* April 22 – May 2. This live televised event is NHPTV's largest fundraiser, raising over \$300,000 to support the station's programming and educational outreach and engagement services. It is also NHPTV's largest community engagement event and fundraiser, supporting small and large businesses, artists, restaurants and others from around the region. Traditionally held over 10-consecutive nights, the schedule this year had a 3-day break in the middle to minimize the disruption to NHPTV's program schedule in the popular Sunday – Tuesday primetime slots.



More than 750 volunteers working behind the scene make the Spring Auction possible. They received the Volunteers in Fundraising award from the National Friends of Public Broadcasting.

In November, NHPTV held its *6th Online Holiday Auction*. While smaller than the Spring Auction since it is solely online, it attracts bidders from all over, raising over \$65,000. nhptv.org/auction

ENGINEERING, FACILITIES AND TECHNOLOGY

NHPTV's Engineering staff continued working toward a centralized Master Control at WGBH in Boston. This is part of the groundbreaking collaborative agreement NHPTV entered into when the station lost its state funding in 2011. The end result will be the same to the viewer and saves NHPTV several hundred thousand dollars in equipment maintenance and upgrades annually. NHPTV is scheduled to go live in September 2015. The upgrade will be done at no additional cost to NHPTV.

Facilities

Since the staff reduction in 2011, NHPTV had unused space in the Broadcast Center. Consequently, office spaces were consolidated, and in January 2015, NHPTV welcomed University of new Hampshire tenants into the unoccupied space, creating a new revenue source for NHPTV.

Information Technology (IT)

The IT department's four-person staff was involved in the implementation of upgrades to software and database systems, specifically those for the Membership Department. IT also worked closely with Sony and WGBH with the centralized Master Control project, and upgraded NHPTV's email server and external tape archive system.

Passport Craft Beer & Food Pairing Tour

NHPTV held its 7th annual *Passport Craft Beer and Food Pairing* event in September. A partnership with Strawberry Banke Museum in Portsmouth, Passport is a fundraising event for both organizations. The event attracts more than 1,000 guests to the grounds of the museum in the heart of Portsmouth's historic district to enjoy pairings of craft beer and food from local restaurants. Passport is NHPTV's second largest fundraising event, and it sells out year after year. nhptv.org/passport

NHPTV Car Raffle

NHPTV held its 3rd Car Raffle in FY15, partnering with the Grappone Automotive Group to raffle \$25,000 toward the purchase of a new car for the winner. Tickets were \$50 each or three for \$100. Other prizes were offered for "early bird" ticket purchases, and for second and third place prizes. The raffle was heavily promoted on-air, on local radio, online, via various social media outlets and through the station's e-communications, resulting in sales of nearly 1,700 tickets.

President's Dinner

NHPTV held its second President's Dinner at LaBelle Winery in Amherst in November for the station's leadership donors. This intimate event was an opportunity to meet with NHPTV President and CEO Peter Frid, to hear about the station's achievements and goals, and also to thank these key supporters.

CORPORATE

The 100 Club
Anthem Blue Cross and Blue Shield
BAE Systems
Bauhan Publishing LLC
Bear Rock Suites
Bella's Casual Dining
Binnie Media
Blue Seal Stores
Bottomline Technologies, Inc.
Capitol Center for the Arts
Casino Ballroom
Children's Hospital at Dartmouth
Children's Museum of New Hampshire
The Colonial Theatre
Conway Scenic Railroad
Cranmore Mountain Resort
Cross Insurance Agency
Currier Museum of Art
Daniel Herbert Inc
Dartmouth-Hitchcock Medical Center
Davies Tire
Deb and Dukes Monogrammers, LLC
Depot Square
Devine Millimet
Dynamic Networking Services
Eastern Mountain Sports
EnviroVantage
The Exeter Inn

Federal Savings Bank
Field Entertainment
Fidelity Investments
Financial Planning Association of Northern New England
Girls, Inc.
Green Alliance
Gundalow Company
Hannaford Supermarkets
Heinemann
Hitchiner
Manufacturing Co., Inc.
Kase Printing, Inc.
Katie & Doug Wheeler
Kearsarge Magazine
Keene Sentinel
Keene State College
LaBelle Winery
Lancaster Eye Care
League of New Hampshire Craftsmen
Ledy Center
Lindt & Sprungli (USA) Inc.
Littleton Coin Company
Littleton Regional Hospital
Live Nation
Loon Mountain Resort
Lowell Memorial Auditorium
Lowell Summer Music Festival Foundation
Macaroni Kid
The Mall at Fox Run
Manchester Monarchs
Manchester Radio Group
Monadnock Paper Mills
Markem-Imaje Corp.
Marzano's Trattoria

Massachusetts Eye and Ear Infirmary
McKinnon's Supermarkets
McLean Communications
Measured Progress
MediaVest Worldwide
Mezzanine Catering, LLC
Monadnock Mountain Spring Water
Monadnock Oil & Vinegar Co.
Mount Washington Cruises
Mountain Club at Loon
Mount Washington Valley
Accommodations
The Music Hall
National Education Association of New Hampshire
The Nature Conservancy
New England Coach
New England Expos
New Hampshire Association of Insurance Agents
New Hampshire Ball Bearings Inc.
New Hampshire Businesses for Social Responsibility
New Hampshire Center for Non Profits
New Hampshire Conference for Women
New Hampshire Film Festival
New Hampshire Fisher Cats
New Horizons Computer Learning Ctr.

NHHEAF Network Organizations
Nippo Lake Golf Club
NNE Coca Cola
North Country Health Consortium
Northeast Delta Dental
Omni Mount Washington Resort
Palace Theatre
Pax World Mutual Funds
Perley Industries Inc.
Peterborough Community Theatre
The Peterson's Inc.
Plymouth State University
Portsmouth Symphony Orchestra
Proulx Oil And Propane
R. M. Davis
Rath, Young & Pignatelli, Professional Corporation
Reeds Ferry Sheds
The Retirement Financial Center
Rocky's Ace Hardware
Runyon Law Firm
Santa's Village
Seacoast Media Group
Seacoast Repertory Theatre
Service Credit Union
SFC Engineering
Shaheen & Gordon, P.A.
Sheehan Phinney Bass + Green, P.A.
Silver Fountain Inn
Society for the Protection of NH Forests
Southern Wine and Spirits

Stay Work Play
Stonyfield Farms
Story Land
Summerhill Retirement Community
Symphony New Hampshire
Tower, Crocker & Smith, P.A.
Unitil
University System of New Hampshire
Virtual Learning Academy Charter School
Waste Management of New Hampshire
Water Country
Wentworth Douglass Hospital
Womensaid of Greater Portsmouth
Yankee Magazine

AUCTION SUPERBOARD DONORS – SPRING & WINTER

A Friend of NHPTV (2)
A New You Center for Hypnosis
Adaptations Unlimited
Arrowhead Farm
Attitash Grand Summit Hotel & Conference Ctr.
Auger & Sons Inc.
Beacon Hotel Corporation
Better Hearing Center
Cannon Mountain Celestial Cruises

Compass
Rose Inn
Constellation
Senior Players
Championship
D. F. Richard Energy
Dutille's Jewelry Design Studio
Eckman Engineering LLC
Epping Well & Pump
E-Z Docking Solutions
Golden Eagle Lodge
Golf Management Company
Good Fortune Jewelry
Harbour Design, Landscape Design and Construction
Isles of Shoals Steamship Co.
Jack's Voice
KD Mason
Kingston's Karts
Lighthouse Preservation Society
The Late Show with Stephen Colbert
Lighting Place Inc.
LiveEdgeArt.com
London Livery Company
Mark Knipe Goldsmith, LNH
Massage Associates
Medallion Healthy Homes
Mission Oak Grill
Mount Washington College
New Horizons Computer Learning Centers
NH Magazine McLean Communications

NHPTV - Windows to the Wild
Nippo Lake Golf Club
Nvest Financial Group
Omni Mount
Washington Resort
Outfront Media
Physician's Healthy Weight Center
Reeds Ferry Sheds
Relief Lightship Baskets
Renaissance Resort
St. Augustine Seaside Village Resort
Snowflake Inn
Sounds Spectrum DJ's
Southern NH University Continuing Education Division
Springer's Jewelers
Squam Lakes Camp Resort
St. Gregory Luxury Hotel
Stambaugh Musical Design
Star Island Corporation
Sugar Hill Inn
Tariki Limited LLC
Terrapin Tours
The Granite YMCA
The Horny Toad Guesthouse
The Omni Parker House Hotel
White Mountains Attractions Association
Woodward's Resort
WSHK The Shark
WPKQ
Your New England Toyota Dealer

Downton Abbey-Inspired Tour of England

NHPTV partnered with Milne Travel on a *Downton Abbey*-inspired trip to England for fans of the series. NHPTV President and CEO Peter Frid accompanied travelers on the 8-day tour in May, visiting the sites of *Downton Abbey* and other British landmarks. Tours such as this are part of NHPTV's diverse fundraising strategy.

25th Anniversary of *Ciao Italia*

NHPTV celebrated 25 years of the landmark PBS cooking show, *Ciao Italia with Mary Ann Esposito*, at the Tuscan Kitchen restaurant in April. The program got its start in the studios of New Hampshire Public Television and is the longest running televised cooking program in America. More than 100 guests were treated to a menu created by Mary Ann. VIP guests enjoyed a special wine tasting and private cookbook signing with Mary Ann.

Tomie dePaola, award-winning author, illustrator, NH resident and friend of Mary Ann Esposito, contributed one of his *Strega Nona* prints called "The Cooking Lesson" as a silent auction item for the event.

America's Test Kitchen Dinner

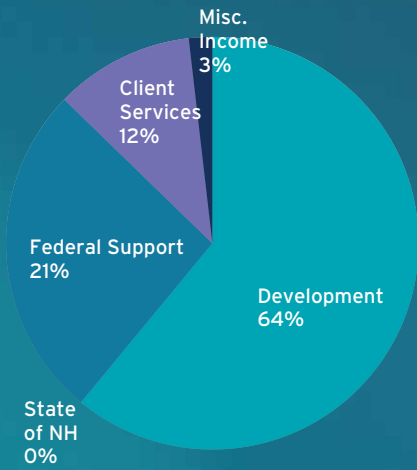
Capitalizing on this popular cooking show and our proximity to its location in Boston, NHPTV hosted a special dinner there in October hosted by the *America's Test Kitchen* personalities, including its host and founder Christopher Kimball.



Top: Glasses await another sold-out *Passport Craft Beer & Food Pairing Tour* event at Strawberry Banke Museum in September.

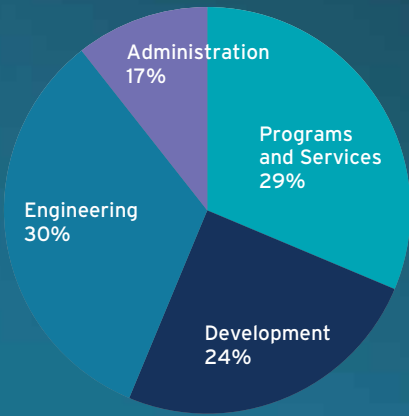
Bottom: Cooking show icon Mary Ann Esposito joins NHPTV President & CEO Peter Frid and Board chair Jeff Gilbert at the party celebrating *Ciao Italia's* 25th anniversary.





FY15 REVENUE

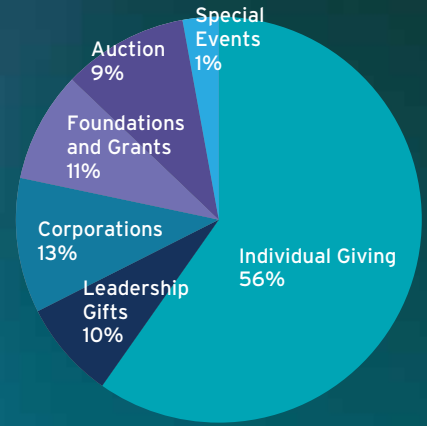
Development	\$3,931,925
State of NH	0
Federal Support	1,262,343
Client Services	700,325
Misc. Income	150,399
Total	\$6,044,992



FY15 EXPENSES*

Programs & Services	\$2,382,169
Development	1,787,798
Engineering	1,345,498
Administration	1,148,270
Total	\$6,663,735

*Includes depreciation



FY15 DEVELOPMENT GIFTS

Individual Giving	\$2,259,266
Leadership Gifts	385,643
Corporations	447,625
Foundations & Grants	438,039
Auction	344,907
Special Events	56,445
Total	\$3,931,925

**Preliminary and unaudited

FOUNDATION GRANTS

Alice Reen Charitable Trust
 Anna & Raymond Tuttle Horticulture Fund
 Butler Foundation
 Endowment for Health Fuller Foundation, Inc.
 Gilbert Verney Foundation
 Lincoln Financial Foundation
 Mount Washington Cog Railway
 New Hampshire Charitable Foundation
 Roy A. Hunt Foundation
 Samuel P. Hunt Foundation
 WETA

BEQUESTS

Norman Gagnon
 Margaret E. Kayser
 Terese L. Lane



Anonymous (18)
 Anita Fund of Northern New Hampshire
 Ms. Patricia Ansdell
 The Paul & Edith Babson Foundation
 Ray & Cynthia Barrette
 Carter A. Beck
 Carolyn & Randy Benthien
 John & Pamela Blackford
 Mr. Ralph D. Booth, Jr. & Mrs. Betsy Booth
 Mr. & Mrs. Q. David Bowers
 The Byrne Foundation

Ms. Sandra L. Burgoon
 Mrs. Clara W. Butler
 Virginia S. Champlin
 Mr. & Mrs. H. G. Chase
 Sen. Martha Fuller
 Clark & Geoffrey E. Clark, M.D.
 Mr. William Cochran
 Mark & Patricia Collin
 Mr. & Mrs. Woolsey Conover
 Bradford E. and Kathleen D. Cook
 Mr. & Mrs. William Day
 Dawn DeAngelis & Richard Jeffrey
 Dr. Robert Dewey & Ms. Pamela Van Arsdale
 Mr. Francis J. Doherty
 Mr. Daniel E. Donovan & Mrs. Maureen F. Donovan
 Doris L. Benz Trust
 Anne F. Doucet
 Maureen Dunn-Click
 Mr. David Eastman
 Kathy Eneguess
 Charles & Charlotte Faulkner
 Mr. Fred Ficken & Mrs. Patrice Ficken
 Robert & Joyce Fieldsteel
 Ms. Susan J. Fox
 Ms. Kelly Fredrickson
 Peter & Katherine Frid
 Alphonse Gerrato, Jr.
 Francis & Joan Gicca
 Rep. Jeffrey D. Gilbert & Mrs. Penelope Gilbert
 Betsy Gillin
 Elisabeth W. Gilroy
 Mr. Jonathan L. Goodwin
 Mrs. Kirthi Govindarajan
 Joan Granlund
 Venetia Guerrasio & Tom Stoker
 Mrs. Ann Hackett
 Mrs. Dorothy Hackett

Harold & Margot Haddock
 Mr. & Mrs. Lindley H. Hall
 Sam & Betsey Harding
 Mrs. Carol Hollingsworth
 James F. Hornig
 Mr. John A. Hubbard
 Mr. David Hughey & Mrs. Diane Hughey
 Marilyn P. Johnson
 Philip & Susan Keenan
 Mr. Kevin L. Keller & Mrs. Punam Keller
 Patsy & Skip Kendall
 Diane & Fred Kollmorgen
 Mr. & Mrs. Herb Langer
 Mr. & Mrs. Alan E. Lewis
 Mr. Rick Litchfield & Ms. Beverly Davis
 Ms. Ingeborg Lock
 Ms. Mary Jane Long
 Mr. & Mrs. D. Loring
 Mr. & Mrs. Douglas Loudon
 Anne Lovett & Stephen Woodsum
 Ms. Karen MacEachern
 Ed & Phyllis MacKay
 Mrs. Reeves C. MacLellan
 Richard & Barbara Maloney
 Ms. Pauline Mandravelis & Ms. Faye Mandravelis
 Ms. Colleen Mannion
 Mrs. Stephany Marchut
 Lavallee & Mr. Ronald Lavallee
 Jane Marett
 Mr. John Mattill
 Shirley & Donald Mason
 John McGonagle/
 Carter Harrison
 Ms. Mary McIver
 Mr. Edward Mehigen
 Mrs. Elizabeth Merriam
 & Mr. Frank Weeks
 Jack Middleton

Anne D. Milne
 Dr. M. Jonathan Mischon
 Mrs. Clara Mixer
 Mrs. Barbara Moore
 Mr. David C. Mores
 The Nichols Trust
 Mr. & Mrs. William O'Donnell
 Herbert & Virginia Oedel
 Mr. & Mrs. Henry W. Parker
 G. Patel
 Ms. Carol A. Pechet
 Mr. Marc Phaneuf
 Ms. Penny Pitou & Mr. Milo Pike
 Larry & Barbara Pitsch
 Mr. & Mrs. Roger Proulx
 Mr. & Mrs. Frederick Pulitzer
 Jim & Judy Putnam
 Phyllis & Peter Reed
 David & Celeste Reid
 Lisa Reid
 Steve & Kit Reno
 Ms. Hilda Rideout
 Mr. William Rios
 John and Martha Robb
 Mr. Randolph R. Roody & Ms. Deborah Roody
 Mr. Lars Rydell
 Mrs. Maryanne Sarro & Mr. John Sarro
 Ms. Mary Schumann-Drewak
 Anne S. Segal
 Mr. & Mrs. James Sheridan
 Zach & Nancy Slater
 Sandra Smith
 Carl & Judith Spang
 David Speert
 Mr. Paul A. St. Hilaire
 Ms. Elisabeth B. Sturges
 Ms. Carolyn Sundquist
 Systems & Communications Sciences, Inc.
 John F. Swope

Mrs. Mary Taxiarchis
 Ms. Candace W. Thayer
 Bayard & Susan Tracy
 Mrs. Vivian S. Treat
 Mr. Drury L. Vinton
 Lucie Watt
 Mrs. Karlene Wadleigh
 Mr. Richard H. Webb
 Mrs. Beatrice Weinstein
 Mrs. Barbara Werdelin
 Hon. Katherine W. Wheeler & Mr. Douglas Wheeler
 Mr. Norman A. Whitaker & Mrs. Eleanor Whitaker
 Mr. & Mrs. Frank Windsor
 Mr. Jessie Wood & Ms. Shawn Fraim
 Mrs. Anne Zachos
 Sylvia L. Thayer & J. Philip Zaeder
 Ms. Nancy Zurhellen



Anonymous (29)
 Mr. Robert Adams & Ms. Constance Aubin-Adams
 Mr. Thomas Adams & Mrs. Marion Adams
 Mr. & Mrs. Stephen R. Ames
 Mrs. Irene Anderson
 Anne S. Howells
 Charitable Trust
 Rich & Lori Ashooh
 Mr. Peter D. Athearn
 Mr. Stephen G. Baer
 Cynthia & Tony Bajdek
 Ms. Priscilla Baker
 Mr. & Mrs. John H. Baker
 Mr. Lawrence Balboni
 Mr. Jay Ballard
 Stephen P. Barba

Mrs. Gail O. Bates
 Ms. Rosa Beane & Mr. S.R. Beane
 Dr. & Mrs. Ralph Beasley
 Mr. Todd Benninghoff & Mr. William T. Benninghoff
 Mr. George Bentas
 Mr. Bruce Berg
 Mr. Paul Berry
 Mrs. Jill Beverstock
 Mr. & Mrs. R. H. Bleiler
 Ms. Nancy Blumberg
 Ms. Mary Jane Bogacki & Ms. Diane Bogacki
 Miss Evelyn Bonander
 Mr. Charles P. Boswell
 Mr. A. Paul Boucher
 Ms. Katharine Boynton
 Mr. Stephen Bradley
 Ms. Barbara Brawley
 Mr. William Breed
 Mrs. Bronwyn Brench
 Mr. Christopher Brett
 Mr. & Mrs. Robert Bridgham
 Mr. & Mrs. Peter Brock
 Mr. Norman Bronzo
 Mr. David Brooks
 Ms. Sara Brouillet
 Mr. Robert Brown
 Mrs. Barbara H. Brown
 Mrs. Charlotte F. Brown
 Mr. Wilson Brunkhurst
 Ms. Anne L. Bryan
 Mrs. Paula Bryant
 Ms. Jeanne Buchanan
 Mr. James C. Buck
 Mr. Gary A. Bullock
 Ms. Meredith Bunting
 Ms. Monica Burch
 Mr. Richard Burgess
 Mr. Howard Burke
 Mr. Albert Byrnes
 Ms. Lynda Caine
 Mr. Donald Caldwell
 Mrs. Joan C. Camann
 Ms. Mary P. Campbell
 Ms. Nancy G. Canali

Mr. Richard Cariseo
 Ms. Constance Carney
 Mr. Paul Carr
 Mr. Robert Carr
 Mr. Rocco Castellano
 Ms. Joyce Catanzaro
 Dr. & Mrs. Jerry R. Chamberlin
 Mr. William J. Charland & Ms. Judith M. Pinkham
 Ms. Colleen Chen
 Anuhya Chilakapati
 Mr. Kevin Clark
 Mrs. Sally A. Clark
 Karen Clement
 Dr. William E. Clendenning
 Ms. Noele M. Clews
 Mr. Addison Cole
 Mrs. Carolyn Colpitts
 Mr. A. Bradford Conant
 Mrs. Joan Connacher
 Mr. Hiram Connell
 Mr. Peter Connolly
 Mr. David J. Connor
 Mr. Richard Cornelius & Ms. Judy Reed
 Ms. Ethelyn Crandell
 Mr. Robert Craven
 Dr. & Mrs. Chuck Crawford
 John & Leslie Crowe
 Mr. & Mrs. Ronald Crowley
 Hon. & Mrs. David Currier
 Roderick Cyr
 Mr. & Mrs. R. Dave
 Mr. Robert De Feyter
 Ms. Joanne P. DeBold
 Mrs. Estelle M. Decatur & Ms. Dusty Decatur
 Mr. Lloyd Deenik & Mrs. Susan Deenik
 Mr. Charles E. Dent, Jr.
 Mr. Tomie A. DePaola
 Ms. Susan Desosier

(Continued on page 8) 7

(Continued from page 7)

Mr. Lawrence Disenhof & Ms. Marjorie Disenhof
Ms. Judith A. Domey
Ms. Wanda Donahue
Miss Cheryl A. Donaldson
Mr. & Mrs. Scott Donaldson
Mr. Larry Dow
Ms. Barbara Down-Hunt
Ms. Elizabeth Downing
Ms. Sylvia Dowst
Mr. & Mrs. James Drummond
Mrs. Lorraine Dubisz
Ms. Elizabeth Duck
Mr. Richard J. Dumler
Mr. & Mrs. Robert Dunfee
Christine Dwyer & Michael Huxtable
Mr. Norman Eisenmann
Mrs. Pauline Elkin
Dr. & Mrs. Robert Englund
Mrs. Edward Epreman
Mrs. Cornelia D. Eschborn & Mr. Jens P. Dybwad
Mrs. Estes
Richard and JoAnn Eurich
Ms. Dina Falzone-Kevorkian
Merrill & Beth Fay
Mr. Harley Featherston
Ms. Linda Fecteau
Mr. & Mrs. Frederic Fernholz
George & Phyllis Fischer
Ms. Rose Foley
Ms. Nancy Fraser
Mr. & Mrs. Ivor Freeman
Rep. Barbara C. French
Mrs. Margaret Fritz
Mrs. Diana Frost
Ms. Cheryl Fry
Mr. John Gaffke
Mrs. Pauline Gagne
Mrs. Caroline B. Gale
Ms. Margaret Gallagher
Ms. Joan Gallagher
Mr. & Mrs. Peter Gaughan
Dr. Henry Gellert
Ms. Jacqueline Gendron
Mr. & Mrs. Richard Giddings
Ms. Yvonne Gillen
Mr. & Mrs. Roger Gingrich
Ms. Hallie Goelet
Mr. Andrew Goodchild
Mr. Douglas Goodwin
Mr. Charles Gordon
Ms. Mary Gourley
Mr. Thomas C. Gowen
Mr. A. Jay Graf
Mr. & Mrs. Warren Graff
Mr. & Mrs. Lawrence Graham
Mr. Art Grant & Mrs. Dee Grant
Mr. Gerard R. Gravel
Mr. & Mrs. James A. Green
Ms. Mary E. Green
Zaiga Greenhalgh
Mr. Stephen Greenwood
Mr. Joseph A. Grimes, Jr.
Mrs. Rita E. Grote
Ms. Teresa Gudek
Charlotte Guisti
Mrs. Dorothy Hackett
Mr. Alphonse Haettenschwiler
Ms. Ann G. Haggart
Ms. Catherine E. Hahn
Ms. Barbara F. Hall
Mr. & Mrs. Henry L. Hall, Jr.
Mr. & Mrs. Peter Hall
Mr. Thomas P. Hall
Mrs. Ann Halnon
Mrs. Edith Ham

Mr. Robert Harrigan
Hollis Harrington
M Harris Livens
Mrs. Jacqueline Harwood
Ms. Lois Haskins & Mr. Richard Haskins
Mr. & Mrs. Peter Hastings
Mrs. Janine D. Hawkes
Ms. Constance B. Hayes
Mr. Ross L. Heald
Ms. Elizabeth Hedges
Mr. & Mrs. James Helm
John & Erin Hennessey
Ms. Cynthia Herman
Lucius & Nancy Hill
Mr. Thomas Hindle & Mrs. Tamara F. Hindle
Mr. John Hoffman
Mr. Morton J. Hoffman
Ms. Ruth Hoffman
Corinne Hoge
Mrs. Richard Hollaman
Mr. Arthur Holmes
Mr. & Mrs. Royal B. Holmes
Mr. Frank Holmwood & Mrs. Miriam Holmwood
Dr. Roberta Horn
Ms. Patricia Howard
Mr. & Mrs. Charles Howe
Ms. Dardana Hoyt
Miss Paula M. Hoyt
Mr. & Mrs. Henry Huntington
Mr. Charles Hurley
Mrs. Bonnie L. Hussey
Mr. & Mrs. Roger Jean
Mr. William Jeffery
Mrs. Adrienne M. Johnson
Ms. Sue Jones
Mr. Michael Jones & Mrs. Christine Jones
Mr. Everett N. Jones
Ms. Nanette Jones
Mr. Thomas Jones
Hildegard Junker
Ms. Verne Kaminski
Dr. & Mrs. Donald H. Kaplan
Mr. Merrill Kashiwabara
Mr. Bruce J. Keenan
Philip & Susan Keenan
Ms. Sarah N. Keene
Mr. David Kelleher
Mr. Preston Kelsey II
Ms. Margaret Kennedy
Mr. & Mrs. Timothy Kennedy
Mr. & Mrs. Guy Kimball
Mr. Brad Kinsey
Mr. & Mrs. Harold Kjellman
Mrs. Allison Knab
Mr. & Mrs. Jeffrey C. Knapp
Ms. Mary Knightly
Andrea Kokolis
Ms. Elizabeth Krajcik
Mr. & Mrs. Charles Krause
Ms. Gertrude Kropa
Robert R. & Evelyn Lacroix
Ms. Addie A. Lambarth
Mr. Benjamin F. Larrick
Mr. William R. Larsen
Mr. Richard Laskey
Ms. Giselle Lavoie
Mrs. Mary Susan Leahy
Dr. Andrea LeBlanc
John & Charlott Ruth Leitch
Constance & Deborah Lemay
Miss Jeannine T. Levesque
Capt. & Mrs. Lewellen
Ms. Linda Lewis
Mr. John Litvaitis & Mrs. Marianne Litvaitis
Ms. Barbara Lochiatto
Ms. Ingeborg Lock

Peter Loeser
Mr. & Mrs. George Long
Mr. William Longmaid
Mrs. Shirley Loranger
Mr. & Mrs. Brent Loy
Mr. Tim Lozeau
Col. William F. Luebbert & Mrs. Nancy C. Luebbert
Mr. Donald MacFarlane
Ms. Deborah Macinnis
Miss Susan L. MacMulkin
Ms. Debbie MaGee-Lewis
Mr. & Mrs. Robert Magnusson
Marilyn & Don Malpass
Ms. Jane Mansfield
Mrs. Alice S. Marks
Mr. Fred Marquez
Mr. & Mrs. Lucien Martel
Ms. Sally Martens
Ms. Hannah Martin
Ms. Esther Martin
Mr. Roger V. Mathes
Mr. & Mrs. George R. Mathey
Ms. Ann L. Maynard
Mr. Douglas Maynard
Ms. Janice H. McElroy
Mr. Edward McMillan
Mr. Robert J. Micci & Mrs. Anne Micci
Ms. Christa E. Miller
Dr. Clinton F. Miller & Ms. Laurel A. Miller
Rep. Ailda Millham & Mr. Peter Millham
Ms. Norma M. Milne & Mr. Walter Zanchuk
Ms. Therese Minton
Ms. Sally Miron
Ms. Sylvia S. Miskoe
Ms. Betsy Mitchell
Mr. Timothy Moore
Ms. Elaine Moreau
Mr. George Morgan
Mr. John T. Morgan
Mrs. Winifred Morrissey
Mr. John Moyer & Mrs. Kathleen Moyer
Mrs. Mary L. Howe
Ms. Susan Murtagh
Ms. Maria F. Needham
Mr. John Nelson
Dr. Kristen Nevious
Ms. Susan Newberger
Mr. & Mrs. Joseph Nichols
Mr. Steven P. Nickless
Ms. Wendy R. Northrup
Ms. Elizabeth H. Nutt
Mrs. Kathleen O'Brien
Mr. Charles B. Ohl & Ms. Joan Brouillard
Ms. Sharon Oikelmus
Mrs. Jean Ojemann
Mr. Joseph Oldfield
Ms. Pam Oliver
Mr. John O'Neill & Ms. Sandra A. O'Neill
Ms. Dorinda Ouellette
Mrs. Maria E. Painchaud & Mr. Steven Painchaud
Ms. Diane Palac & Mr. Robert Palac
Mrs. Beverly A. Parker
Mr. Helmut Paulat
Mr. Bill Peabody & Mrs. Sandie Peabody
Lynne Champion & Don Pearson
Edward Perkins
Mr. & Mrs. John D. Peterson
Mr. Jim Phelps
Ms. Gloria E. Philibert
Mr. & Mrs. Robert Pickles
Ms. Margaret Pilat-Roth
Dr. Titus Plomaritis
Sandra Plourde
Mrs. Rose Poirier
Ms. Glennice A. Poisson
Ms. Kathryn Porter
Mrs. Nancy Potter

Mr. Chris Poulin
Ms. Janet E. Prince & Mr. Peter D. Bergh
Ms. Mamie Pulsifer
Mr. & Mrs. John Quinlan
Mr. & Mrs. Edward Ramsey
Ms. Cynthia Ransom
Mr. Paul A. Raslavicus
Mr. David Rasmussen
Elizabeth Rawlinson
Ms. Carol Reagan
Mrs. Maryann Record
Ms. Mary Jane Reece
Ms. Patricia Reigstad
Mrs. Renee Reiner
Mr. Eric Renouf
Ms. Torunn Rhodes
Ms. Patricia B. Rice
Mr. & Mrs. Raymond Richard
Mr. & Mrs. Royal Richardson
Ms. Joan M. Richmond
Ms. Melinda Richmond
Ms. Gloria Robinson
Ann & Ron Rodgers
Ms. Sandra Rodgers
Mrs. Mary Lou Rogers
Mr. Thomas E. Rogers
Mr. & Mrs. Sumner G. Roper, Jr.
Ms. Beatrice Rosen
Ms. Barbara Ross
Mr. David S. Ross
Mr. & Mrs. Werner Rudenfeldt
David & Mary Ruedig
Mr. Richard L. Rush
Dr. & Mrs. Milton Ryder
Mr. Taylor Sage
Mr. & Mrs. David Sanderson
Ms. Pauline J. Sanfacon
Dr. & Mrs. Albert F. Scaramella
Ms. Margot Schafflinger
Mr. & Mrs. Richard D. Schubart
Ms. Margery Schulz & Ms. Marnie Schulz
Ms. Louise Schwebel
Mr. Scott Scribner
Mrs. Maureen Redmond
Scura & Mr. Mark Scura, DMD
Janet Seekell
Mr. Robert J. Selig
Mr. & Mrs. Barrie Sellers
Ms. Anne Shepard
Russell Shillaber
Ms. Diana Shonk
Mr. & Mrs. L. William Slanetz
Ms. Polly A. Slavet
Ms. Mary E. Sliney
Mr. James Smith & Ms. Lenore R. Ekwurtzel
Bob and Mariam Smith
Stanton T. Smith
Mr. & Mrs. David Soddors
Mr. & Mrs. Richard Soucy
Roseanna Spizzirri
Ms. Mary St Pierre
Ms. Sally Stalker
Mr. & Mrs. David C. Starkweather
Mr. & Mrs. Henry Stebbins
Mr. David Steelman
Mr. Paul Steinwachs & Mrs. Sharon Steinwachs
Ms. Linda Steneck
Stepp Family Fund
Mr. David Sterrett
Ms. Lea Stewart
Mr. William Stratton
Mrs. Deborah A. Strohbeen
Ms. Carolyn Sullivan
Ms. Joan Sullivan
Mr. Joseph Sweeney
Mr. E. Clinton Swift
Mrs. Mary Taxiarchis

Mr. Keith A. Taylor
Ms. Lisa Taylor & Mr. Augustus P. Lowell
Ms. Rae Taylor
Ms. Kay Tetreu
The Moroze Family Fund
Ginna Thoma
Mr. Philip P. Thompson, Jr.
Mr. Harmon Thurston
Jonathan A. Titcomb
Mr. & Mrs. John Tobin
Ms. Penny Tobin-Boeckelman
Ms. Patricia Townsend
Mrs. Vivian S. Treat
Dr. & Mrs. David L. Trumper
Ms. Mary Twomey
Ms. Robin Tyler
Ms. Veronica Vahsen
Ms. Elsie Van Buren
Mr. & Mrs. Michael Vanaskie
Mr. Milt Vargelis
Mrs. Robert Varney
Mr. & Mrs. Robin Verdier
David Vincent
Mr. Ester R. Vincent & Mrs. Anne T. Vincent
Dr. Henry E. Vittum
Ms. Karen Wadsworth
Ms. Donna Wagner
Ms. Brenda Wallace
Ms. Margaret Warner
Mr. Garry Watzke
Mr. & Mrs. John M. Weber
Mr. & Mrs. John F. Weeks, Jr.
Mrs. Carol P. Weingeist
Ann & Carden Welsh
Mr. Robert Wentworth
Mr. & Mrs. Charles Whittier
Mr. & Mrs. Peter Widmark
Mr. Paul Wilde
Ms. CherylAnne Williams
Ms. Roxanne S. Wilson
Ms. Shirley S. Wilson
Mr. & Mrs. Steve Wineberg
Mrs. Lucy H. Winship
Nancy Wood
Mr. & Mrs. Robert S. Woodward
Mr. Reed Woodward
Dr. Dorothy Wortmann & Dr. Robert Wortmann
Ro & Bill Wyman
Dr. & Mrs. Ross G. Wyman
Mr. & Mrs. Joseph Youngs
Dr. Joan Zinkawich
Dr. & Mrs. Charles H. Zois
Lee S. Jahnke & Rosemary A. Zurawel

**NHPTV PRIME
NHPTV EXPLORE
CREATE
WORLD**

DIGITAL CHANNELS
11 Durham • 34 Pittsburg
48 Littleton • 49 Keene
50 Hanover

ANALOG
26 Colebrook



ONLINE ANYTIME
nhptv.org

NH
**NEW HAMPSHIRE
PUBLIC TELEVISION**

268 Mast Road,
Durham, NH 03824
(603) 868-1100
themailbox@nhptv.org